

NIGUEL SUMMIT

CONDOMINIUM RENTALS

30252 Pacific Island Dr #100

Laguna Niguel, CA 92677

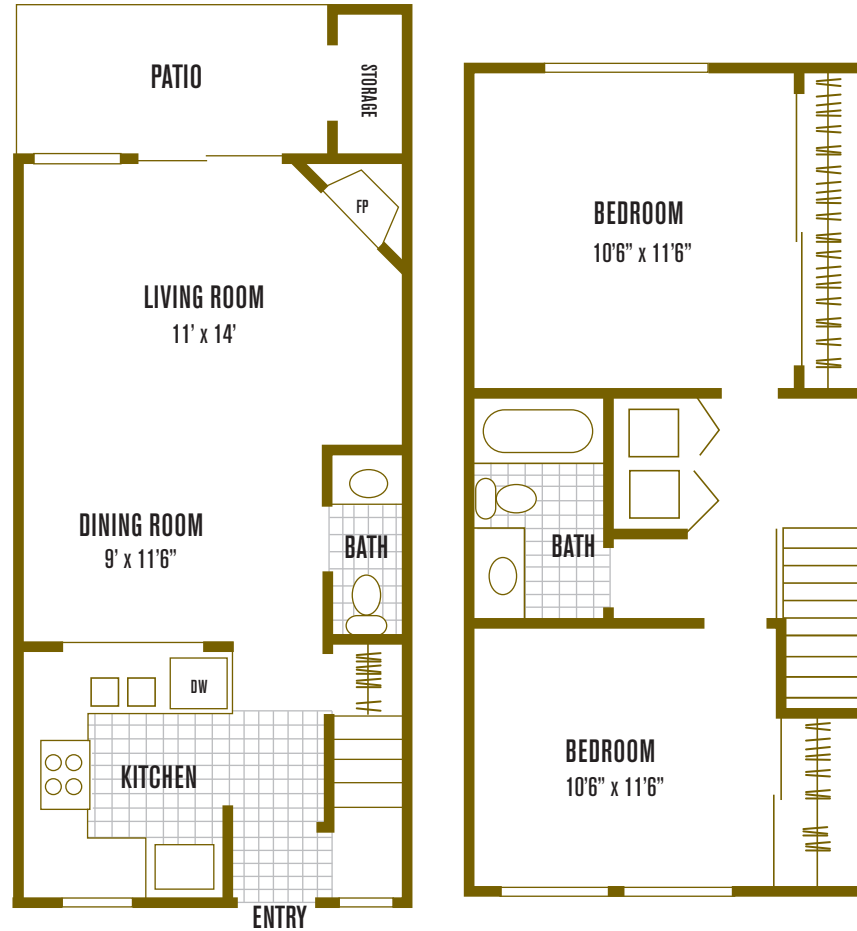
p: 949.495.3575 | f: 949.495.2972

www.ExperienceNiguelSummit.com

This popular townhome offers a pleasing number of features including, connections for a full-size washer and dryer, a large kitchen, a wood-burning fireplace, and an abundance of storage space.

townhome 1

2 Bedrooms | 1 1/2 Bathrooms | 993 sq. ft.



notes: _____

All room dimensions and square footages are approximate.

