

NIGUEL SUMMIT

CONDOMINIUM RENTALS

30252 Pacific Island Dr #100

Laguna Niguel, CA 92677

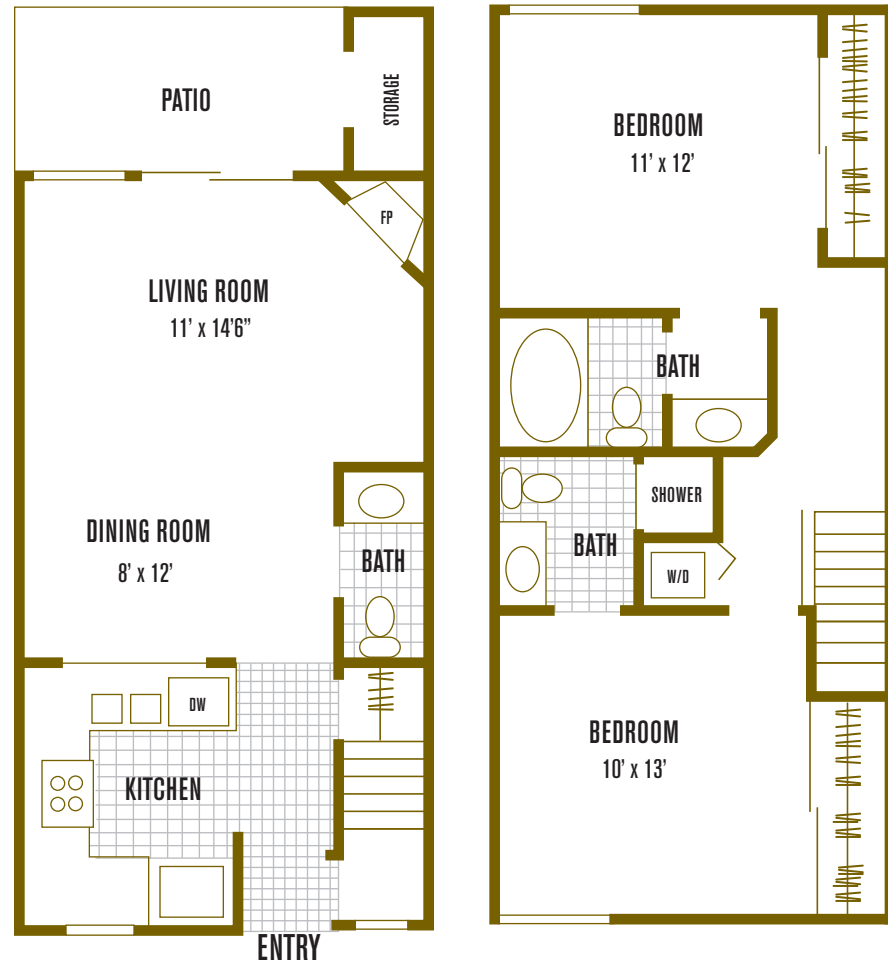
p: 949.495.3575 | f: 949.495.2972

www.ExperienceNiguelSummit.com

The oval roman-style soaking tub, wood-burning fireplace, oversized windows and large kitchen are part of the allure of this spacious townhome. Other appealing features include brand-name appliances, a generously-sized patio and an abundance of closet space.

townhome 3

2 Bedrooms | 2.5 Bathrooms | 993 sq. ft.



notes: _____

All room dimensions and square footages are approximate.

